

SPRAY CHARACTERISTICS

- *Finely atomised hollow cone spray pattern.*
- *Nominal spray angle of 70° (45° and 80° to special order).*

CONSTRUCTION AND MATERIALS

- *Four part design - nozzle body, strainer, tip and cap.*
- *Tip consists of body with orifice insert, distributor and screw pin.*
- *Tips are interchangeable and replaceable.*
- *Body thread sizes are Male BSPT and Female BSPP.*
- *100 - mesh Stainless Steel strainers supplied on request.*
- *Brass with 416 Stainless Steel metering parts.*

ORDER EXAMPLE

HC 5 = Tip Only.

1/4" HC 5 (Male) = Complete Assembly.

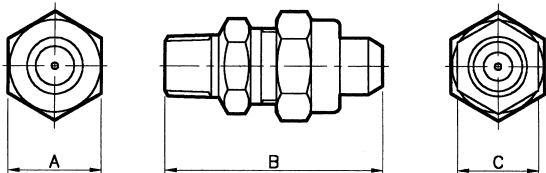
1/4" HC 10 (Female) = Complete Assembly.



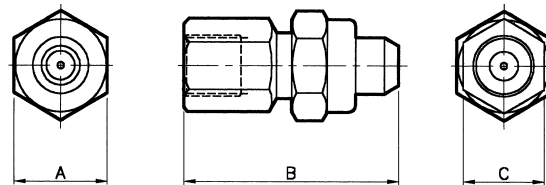
HC TYPE

DIMENSIONS AND WEIGHTS

| Assembly Type | Dimensions (mm) | | | Weight (g) |
|---------------|-----------------|------|-------|------------|
| | A Hex | B | C Hex | |
| 1/8 Female | 20,8 | 47,7 | 18,0 | 70 |
| 1/8 Male | 20,8 | 46,0 | 18,0 | 60 |
| 1/4 Female | 20,8 | 47,7 | 18,0 | 70 |
| 1/4 Male | 20,8 | 47,7 | 18,0 | 62 |



HC (MALE) ASSEMBLY



HC (FEMALE) ASSEMBLY

CAPACITY CHART

Maximum Recommended Pressure: 35 Bar.G.

| NOZZLE NUMBER | FLOW RATE IN LITRES/HOUR AT Bar.G. | | | | | |
|---------------|------------------------------------|------|------|------|------|------|
| | 2 | 3 | 4 | 5 | 6 | 7 |
| HC 1,0 | 3,23 | 3,95 | 4,56 | 5,10 | 5,58 | 6,03 |
| HC 1,25 | 4,03 | 4,93 | 5,70 | 6,37 | 6,98 | 7,54 |
| HC 1,50 | 4,84 | 5,92 | 6,84 | 7,64 | 8,37 | 9,04 |
| HC 2,0 | 6,45 | 7,89 | 9,12 | 10,2 | 11,2 | 12,1 |
| HC 2,5 | 8,05 | 9,57 | 11,4 | 12,7 | 14,0 | 15,1 |
| HC 3,0 | 9,65 | 11,8 | 13,7 | 15,3 | 16,7 | 18,0 |
| HC 4,0 | 12,9 | 15,8 | 18,2 | 20,4 | 22,3 | 24,1 |
| HC 5,0 | 16,1 | 19,7 | 22,8 | 25,5 | 27,9 | 30,1 |
| HC 6,0 | 19,3 | 23,7 | 27,3 | 30,6 | 33,5 | 36,2 |
| HC 8,0 | 25,8 | 31,6 | 36,5 | 40,8 | 44,7 | 48,3 |
| HC 10,0 | 32,2 | 39,5 | 45,6 | 51,0 | 55,8 | 60,3 |
| HC 12,0 | 38,6 | 47,4 | 54,7 | 61,1 | 67,0 | 72,4 |
| HC 14,0 | 45,1 | 55,3 | 63,8 | 71,3 | 78,1 | 84,4 |
| HC 18,0 | 58,0 | 71,0 | 82,0 | 91,7 | 100 | 108 |
| HC 22,0 | 71,0 | 86,8 | 100 | 112 | 123 | 133 |
| HC 26,0 | 84,0 | 103 | 119 | 132 | 145 | 157 |

HOLLOW CONE SPRAY

TYPE HC

Contact our Helpline for any special requirements:
Tel: +44 (0) 151 424 6821
Fax: +44 (0) 151 495 1043
e-mail: sales@delavan.co.uk
Web: www.delavan.co.uk

